

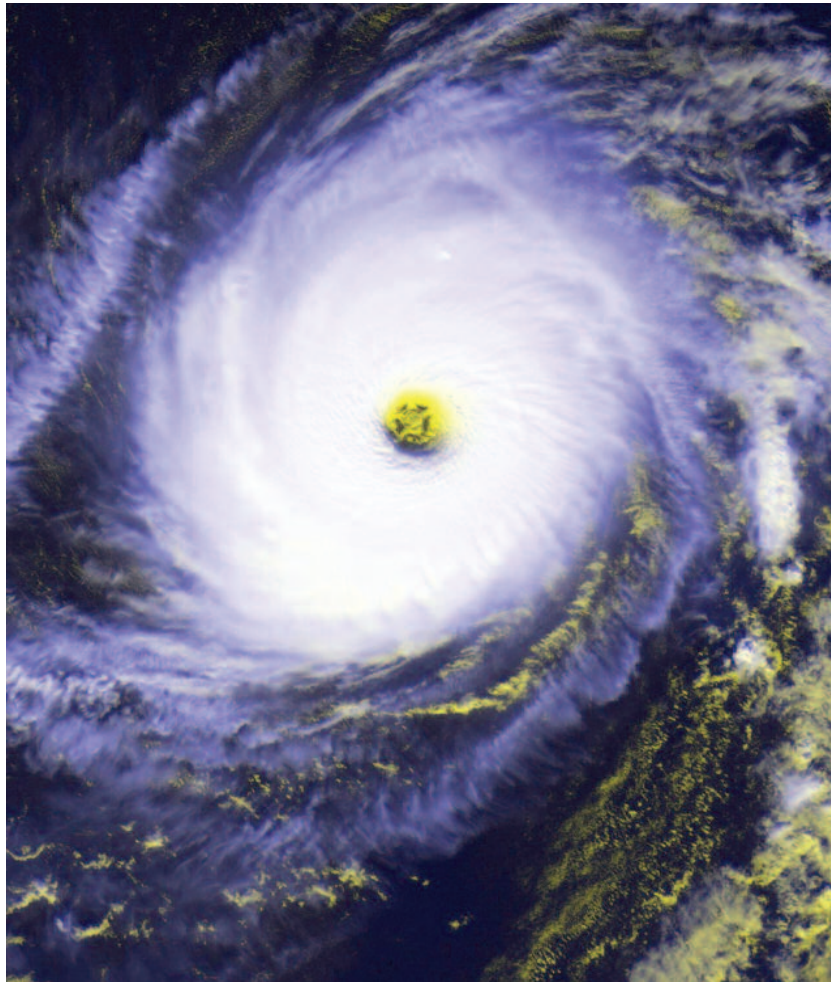
The Baron NOA 11-0322.01 offers a price competitive alternative to your windstorm requirements.

Applications:

Perfect for exterior openings with a maximum +/- 70 psf design load.

Features:

- Polystyrene core door
- 18 ga. face sheets
- Up to 3070 singles
- Up to 6070 pairs



Baron
Steel Doors & Frames

ASSA ABLOY

101 Ashbridge Circle
Woodbridge, Ontario Canada L4L 3R5
Tel: (416) 749-2111
Toll Free: (800) 263-7515
Fax: (905) 851-8346
www.baronmetal.com

ASSA ABLOY, the global leader
in door opening solutions

Copyright © 2011, AADG, Inc., an ASSA ABLOY Group company.
All rights reserved. Reproduction in whole or in part without the
express written permission of AADG, Inc. is prohibited.

NOA 11-0322.01

Available

- 2007 Florida Building Code
- High velocity hurricane zone (HVHZ)
- Up to 3070 singles
- Up to 6070 pairs
- 18 gage
- Polystyrene core
- Outswing application only

Hardware Preps

Hinges

- McKinney TA2714 4-1/2" x 4-1/2"

Singles

- Yale 4600 LN cylindrical lock x ASA x Yale D200 x ASA/NL
- Yale 8800 mortise lock with Deadlatch function x ASA
- Yale 2150 (F) WS rim exit device

Pairs

- Active leaf same as singles
- Inactive Leaf Yale 988Y
- Inactive Leaf Yale M200(F) removable mullion with rim x rim application

Threshold

- Pemko 2005A
- P380 closed cell neoprene gasket
- Additional Pemko sweeps or gaskets can be added

Frame Details

- Knock down or welded
- Existing wall anchors

Baron
Steel Doors & Frames
ASSA ABLOY

101 Ashbridge Circle
Woodbridge, Ontario Canada L4L 3R5
Tel: (416) 749-2111
Toll Free: (800) 263-7515
Fax: (905) 851-8346
www.baronmetal.com