

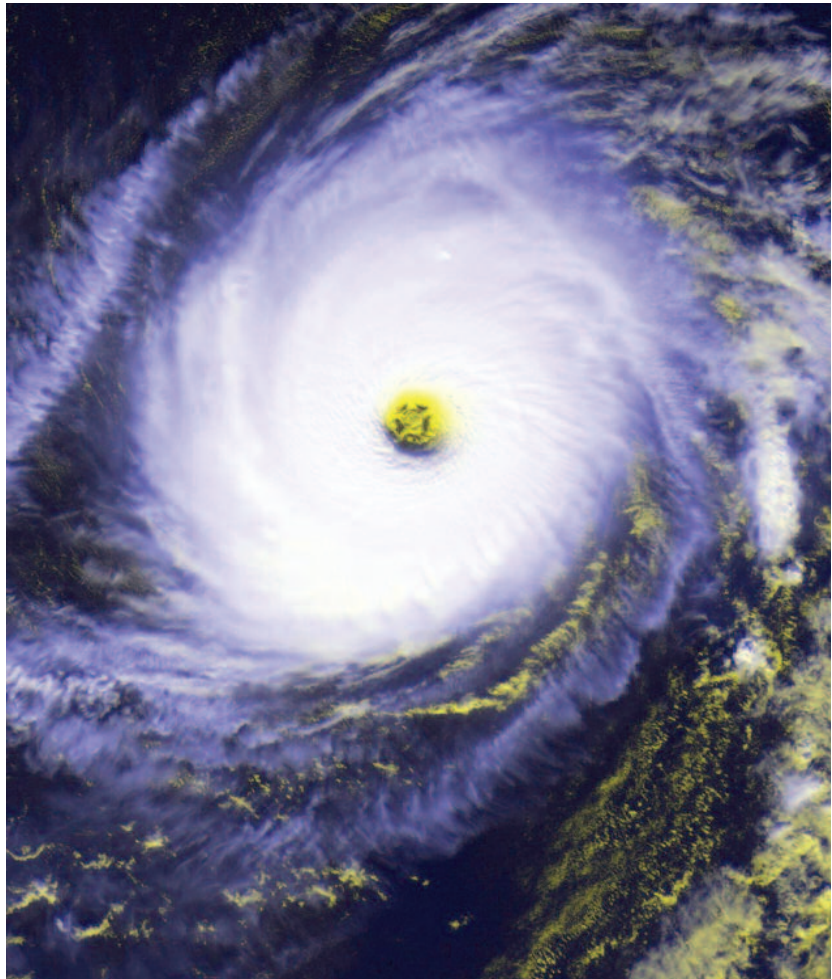
The Baron NOA 11-0322.01 offers a price competitive alternative to your windstorm requirements.

## Applications:

Perfect for exterior openings with a maximum +/- 70 psf design load.

## Features:

- Polystyrene core door
- 18 ga. face sheets
- Up to 3070 singles
- Up to 6070 pairs



**Baron**  
Steel Doors & Frames

**ASSA ABLOY**

101 Ashbridge Circle  
Woodbridge, Ontario Canada L4L 3R5  
Tel: (416) 749-2111  
Toll Free: (800) 263-7515  
Fax: (905) 851-8346  
[www.baronmetal.com](http://www.baronmetal.com)

ASSA ABLOY, the global leader  
in door opening solutions

Copyright © 2011, AADG, Inc., an ASSA ABLOY Group company.  
All rights reserved. Reproduction in whole or in part without the  
express written permission of AADG, Inc. is prohibited.

# NOA 11-0322.01

## Available

- 2007 Florida Building Code
- High velocity hurricane zone (HVHZ)
- Up to 3070 singles
- Up to 6070 pairs
- 18 gage
- Polystyrene core
- Outswing application only

## Hardware Preps

### Hinges

- McKinney TA2714 4-1/2" x 4-1/2"

### Singles

- Yale 4600 LN cylindrical lock x ASA x Yale D200 x ASA/NL
- Yale 8800 mortise lock with Deadlatch function x ASA
- Yale 2150 (F) WS rim exit device

### Pairs

- Active leaf same as singles
- Inactive Leaf Yale 988Y
- Inactive Leaf Yale M200(F) removable mullion with rim x rim application

### Threshold

- Pemko 2005A
- P380 closed cell neoprene gasket
- Additional Pemko sweeps or gaskets can be added

## Frame Details

- Knock down or welded
- Existing wall anchors

**Baron**  
Steel Doors & Frames  
**ASSA ABLOY**

101 Ashbridge Circle  
Woodbridge, Ontario Canada L4L 3R5  
Tel: (416) 749-2111  
Toll Free: (800) 263-7515  
Fax: (905) 851-8346  
www.baronmetal.com

ASSA ABLOY, the global leader  
in door opening solutions